

GVK
SkyCity™
RAJBHAVAN ROAD


by





CONTENTS

Facade Lighting	05
Architecture	09
Overview	19
Neighborhood	23
Msater Plan	29
Entrance	31
Driveway	33
Landscape	35
Plans	47
Model Flat	51
Clubhouse	77
Clubhouse Amenities	79
Terrace Plan	113
Terrace Pool	115
Sky Garden	119
Specifications	137
Location	139
Project consultants	141
About Developers	142

An aerial photograph of a city at sunset. The sky is a mix of soft pinks, oranges, and light blues. The city below is densely packed with buildings, and a large body of water in the foreground reflects the warm colors of the sky. A small boat with a structure on top is visible on the water. The text 'the sky & the city' is overlaid on the right side in a white, elegant serif font.

the
sky
&
the
city



MAGNIFICENCE. INSIDE AND OUT.

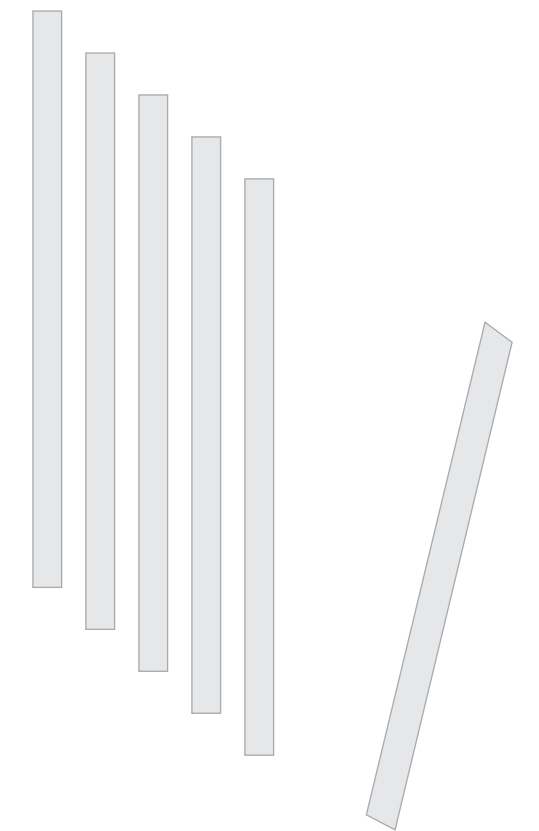


There's the lake in clear sight. The promenades and gardens in plain view. And the vast and wonderful sky, within touching distance, all around. You won't need to deal with anything you don't want to, from here on.





Actual site image



Actual site images







OVERVIEW

3.2

ACRES

4

TOWERS

17

LEVELS

98

APARTMENTS

4 BHK

APARTMENTS

5,555 SFT.

APARTMENT BUILT-UP AREA

3 CAR PARKS

PER APARTMENTS

30,000 SFT.

CLUBHOUSE

Actual site image



BROOK NO DISTRACTION

Live stylishly and luxuriously.
Experience the very pinnacle of comfort.
Right in the heart of town.
Words can do little justice to the experience.

Very little!

Hussain Sagar



GVK Sky City is nestled in a neighbourhood that brings the best of Hyderabad to your doorstep. Overlooking the Hussain Sagar lake and next to Raj Bhavan, Sky City is 5 to 10 mins away from an exhaustive assortment of shopping & entertainment malls, boutique stores, 5 star hotels and prominent parks to browse at your whim.

- Rajbhavan Road
- Necklace Road
- Hussain Sagar
- Jalavihar
- Retail
- Sanjeevaiah Park
- NTR Gardens



Jalvihar

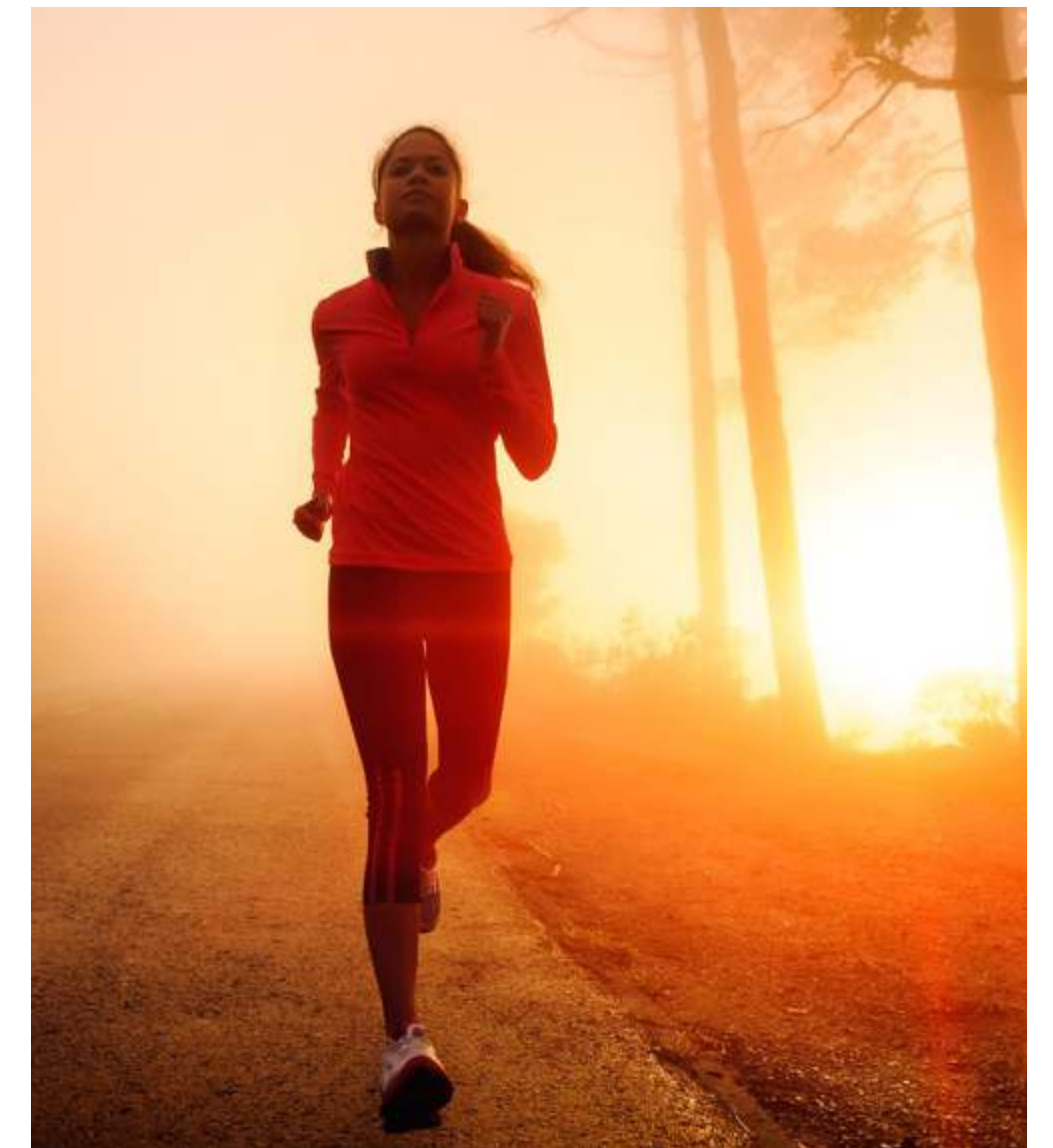


HELLO NEIGHBOUR!

Rajbhavan Road



Necklace Road



HELLO NEIGHBOUR!

Retail



Parks

Sanjeevaiah Park



NTR Gardens



MASTER PLAN





Actual site images

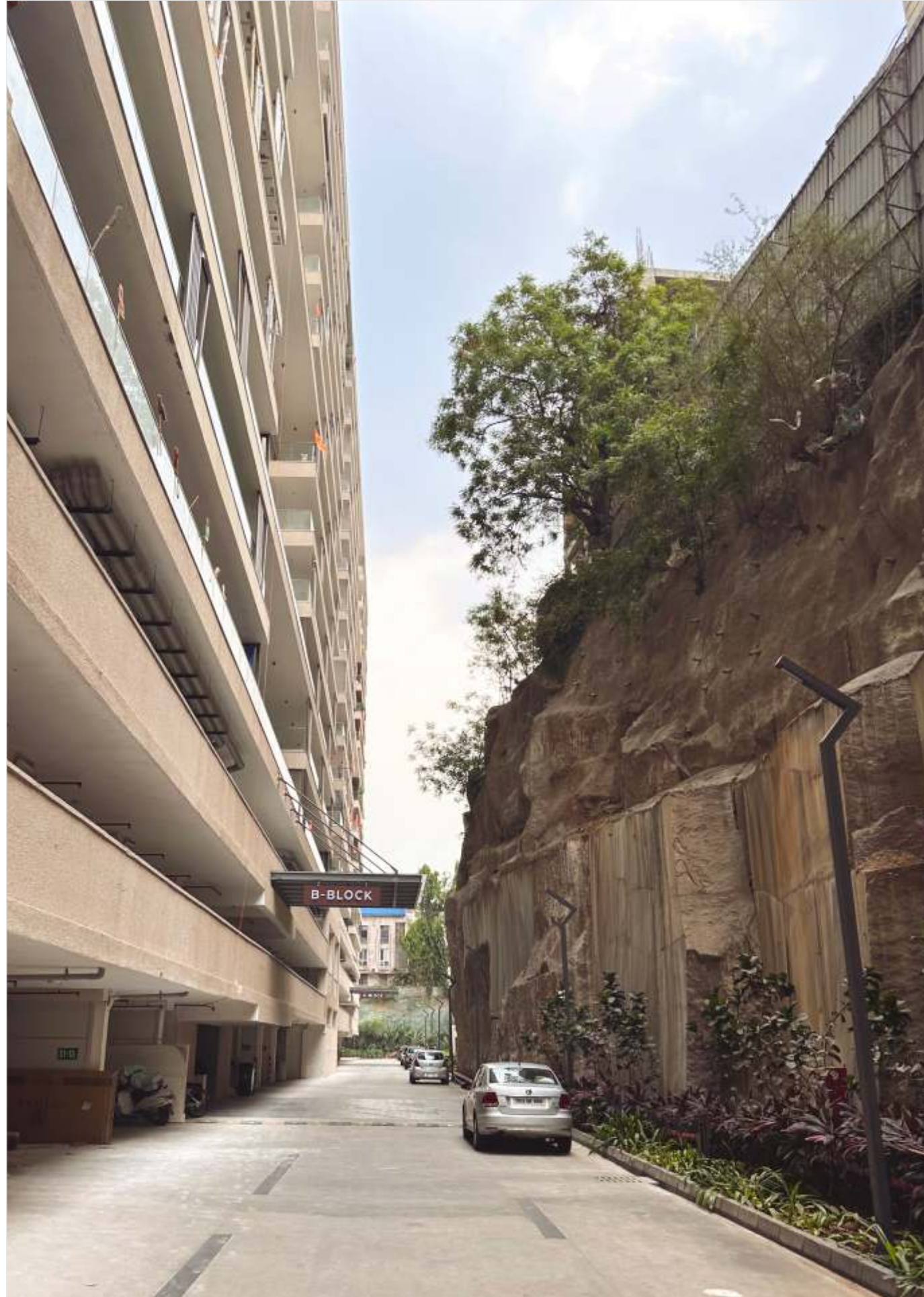


**ARRIVE IN STYLE.
BE WELCOMED LIKEWISE.**

Let the undulating expanse of granite, Italian marble flooring and smooth walls, envelope you in its rich embrace. The visual impact, on arrival, spells class and sophistication, the kind you've come to expect.

Importantly, there are only two apartments on each floor and they come with two elevators apart from a service elevator in each tower.

DRIVE WAY



A beautiful driveway.
Alight at your convenience.



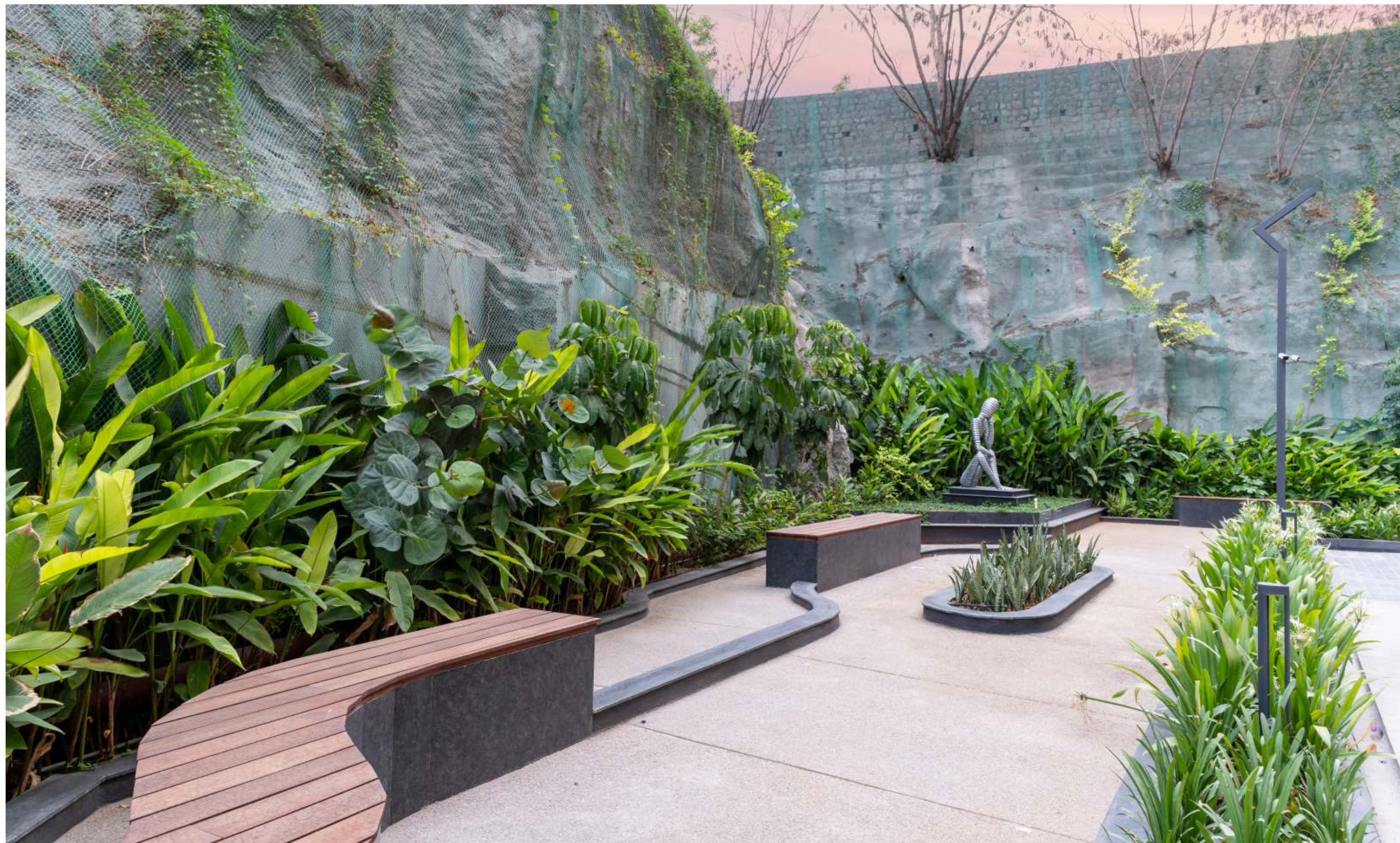
Actual site images



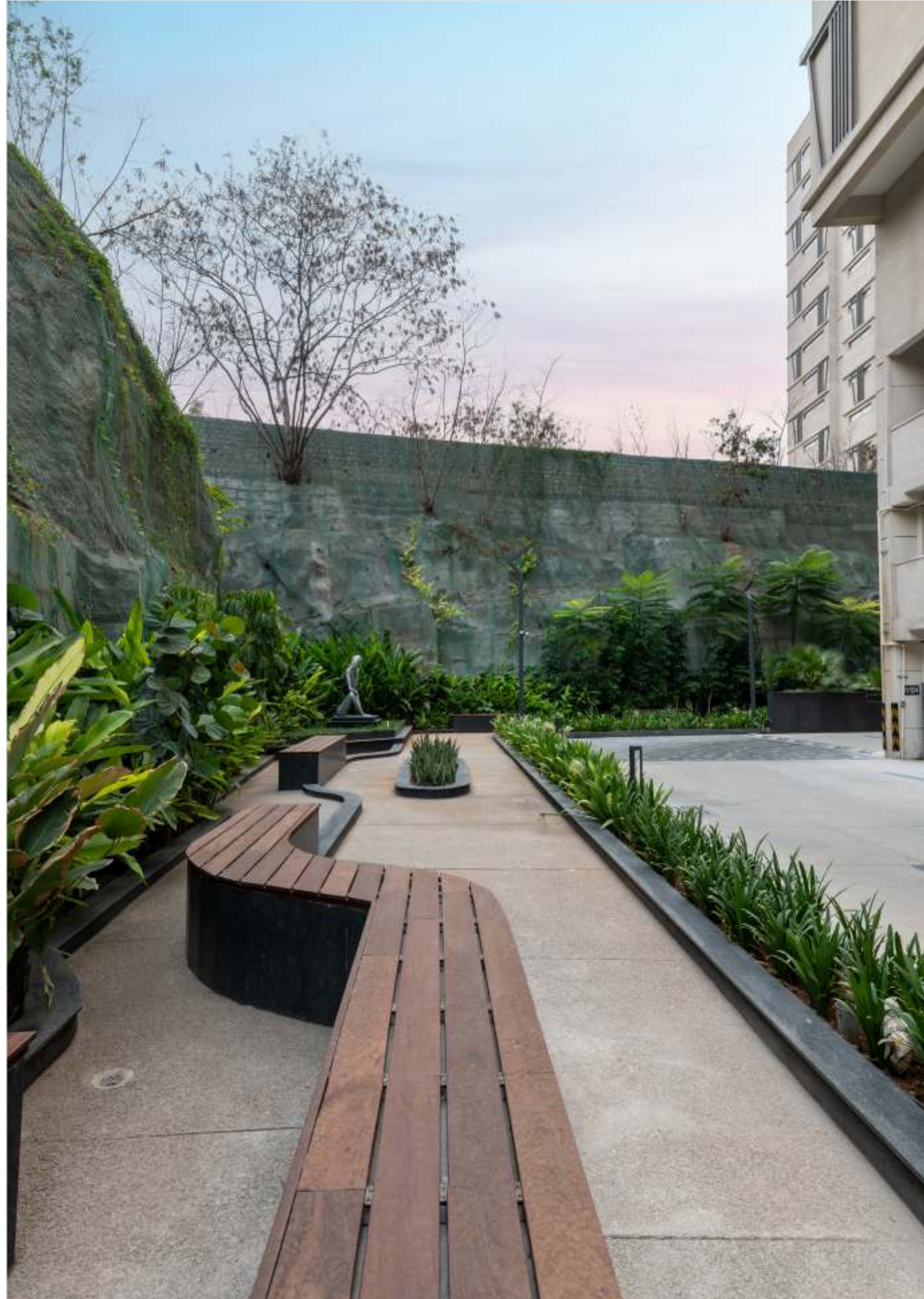
A touch of opulence to your personal outdoor space.

Actual landscape images

Watch the world go by. Breathe deeply.
Feel refreshed, anew!



Actual landscape image



Actual landscape images



Interact at different levels
at different time for different occasions.

Actual landscape images



A secluded haven for relaxation

An outdoor haven that invites you to sit, unwind, and appreciate the natural beauty surrounding your home.

Actual landscape images



Take your training with kids in outdoors

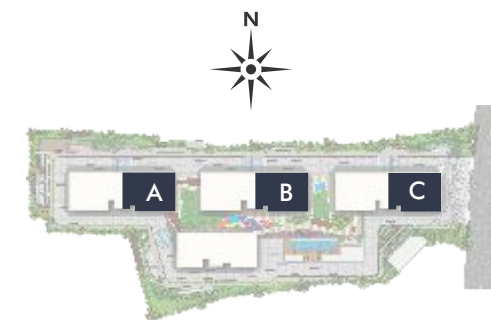
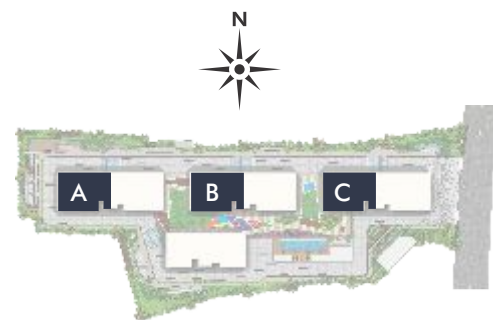
The outdoor gym next to kids play area is a flexible and safe alternative to training indoors, while kids have their share of fun in their play area, you can catch-up with your fitness outdoors.

Children play area & Outdoor gym

TYPICAL FLOOR PLAN

BLOCK - A, B, C | 4 BEDROOMS

BUILT UP AREA - 5555 SQ.FT.



TYPICAL FLOOR PLAN

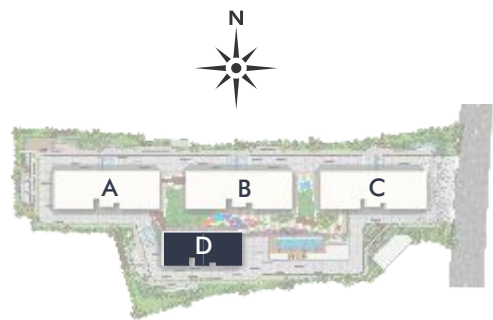
BLOCK - D | DUPLEX

BUILT UP AREA - 5555 SQ.FT.

UPPER LEVEL



LOWER LEVEL





A view to live for!
A view to a thrill.





Live high Or live low.
Live life the way you choose.





Each of the four suites come with VRV air conditioning, italian marble/wooden flooring and floor to ceiling windows which provide spectacular views of the surroundings. Is there a better way to begin and end each day?



The bathrooms are designed as lavishly as the rest of the apartment to give you maximum comfort while you unwind. They feature CP fittings of highly reputed make, wash basins with vanities, LED glass mirrors, shower cubicles and rain showers in master bedroom and two children bedrooms.



Every space showcases your personality, preferences, and way of life.



It is the bespoke features that give a house a genuinely opulent sense.



Model flat

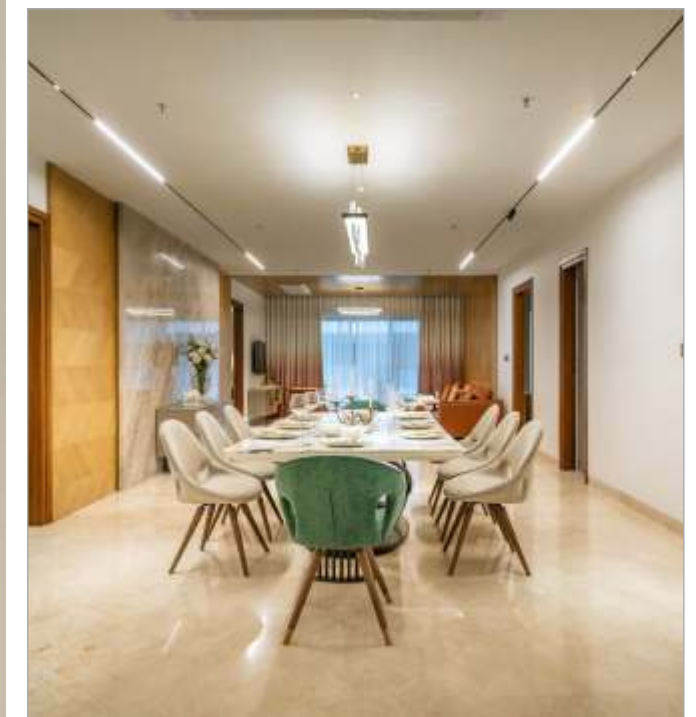


Comfort is ingrained in every area of the home, whether it is through a masterfully designed living space or select components that are both highly practical and gorgeous to look at.



The Master Suite with wooden flooring is planned to pamper you with unparalleled comfort and ambience.

It also features a gorgeous dress area with spacious wardrobe space to store his and her designer wear clothes.



Make the diner arrangements of your choice. And the guest list.

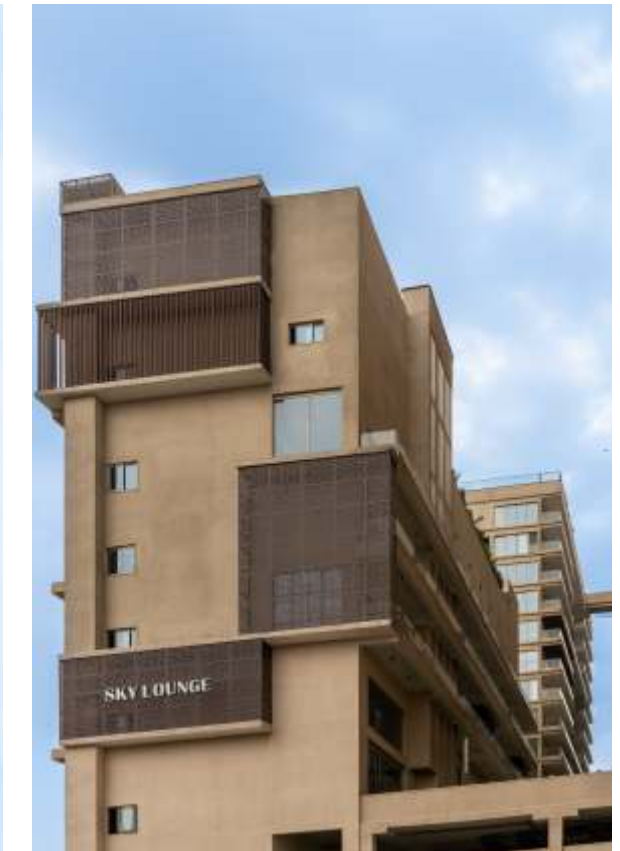
Friends. Neighbours. Distant family.
Accommodates everyone, easily.





Twin kitchens-wet and dry. Separate work areas, for light and heavy work.

Well conceived. Well designed. Well equipped. Most modern and practical. Italian to the core.

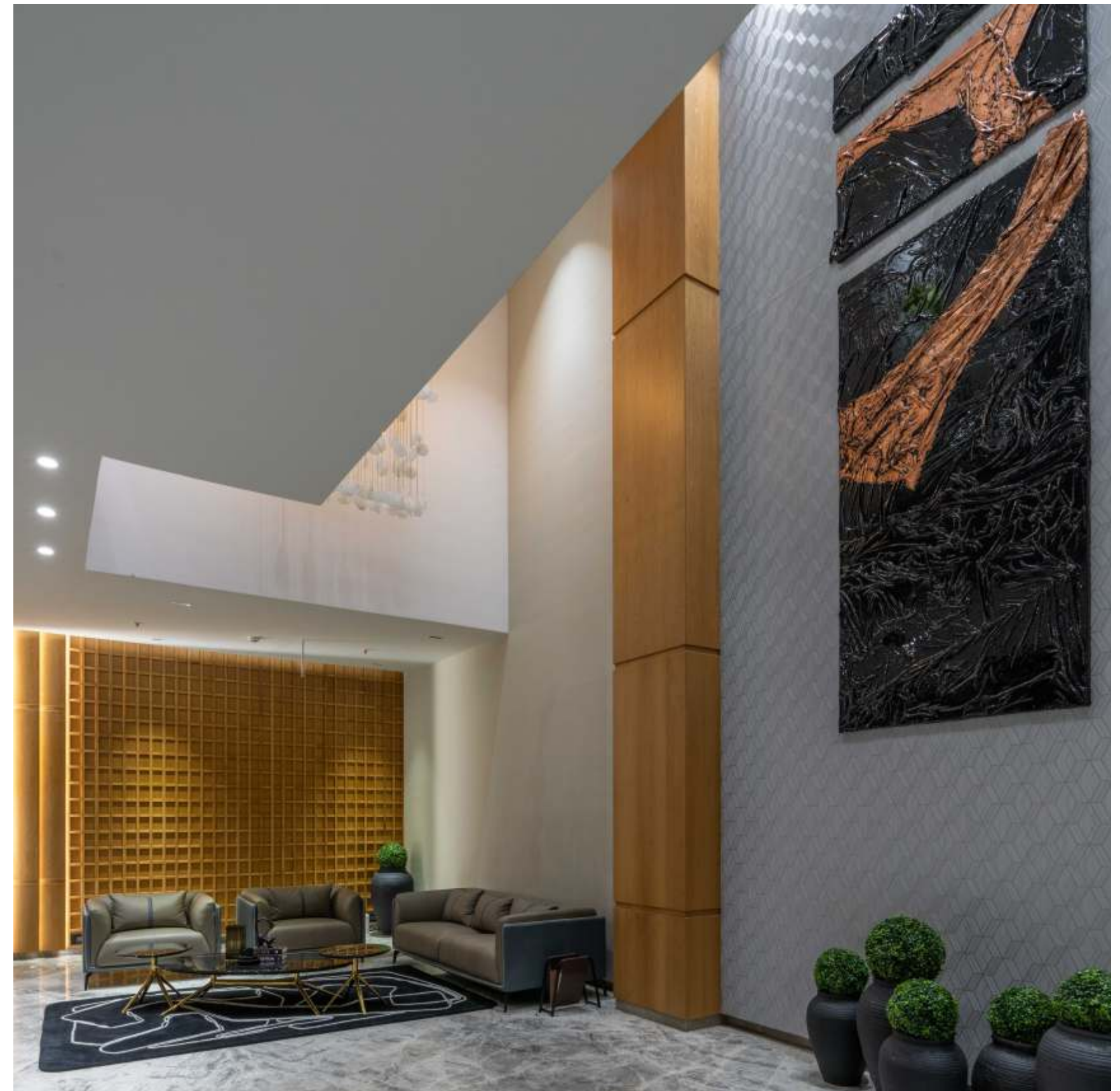
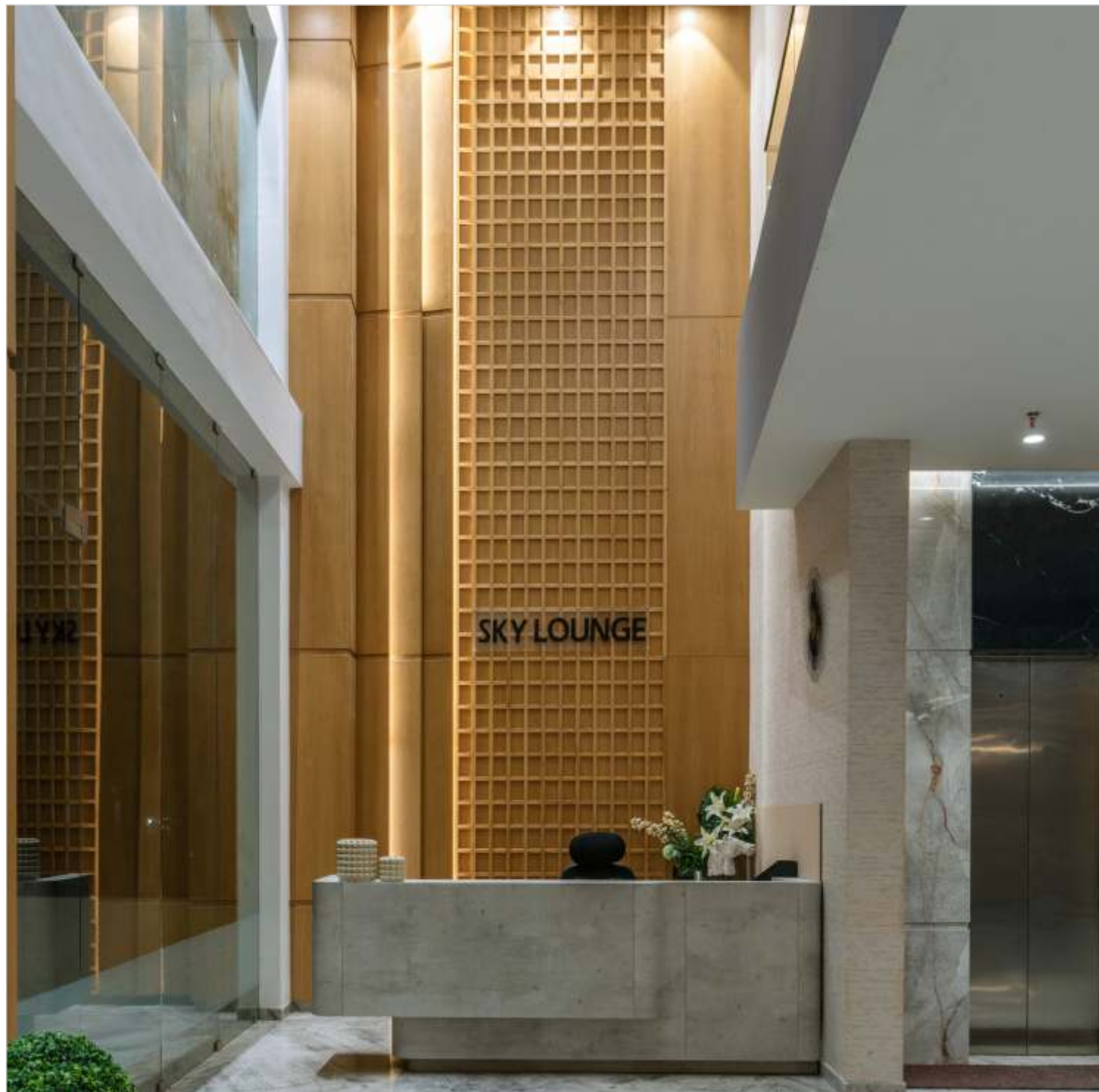


5 Levels of ecstasy

The 30,000 Sft. Clubhouse is in a league of its own. Tastefully and aesthetically designed, it meets all the present day, tech-age requirements of today's young and the trendy. The amenities are lavishly spread across 5 levels and are crafted with flair to compliment your lifestyle.

Actual clubhouse images

From the moment you step into this idyllic paradise, you are enveloped in a world where every detail is a thoughtful addition to elevate your lifestyle.



Actual clubhouse images

Happiness in Waiting

Discover the elements that add a feeling of additional comfort and make your lifestyle a cut above others. With a welcoming and upscale atmosphere, the waiting lounge of the clubhouse assures you that you're going to get elite treatment.



Actual clubhouse image

MULTIPURPOSE HALL



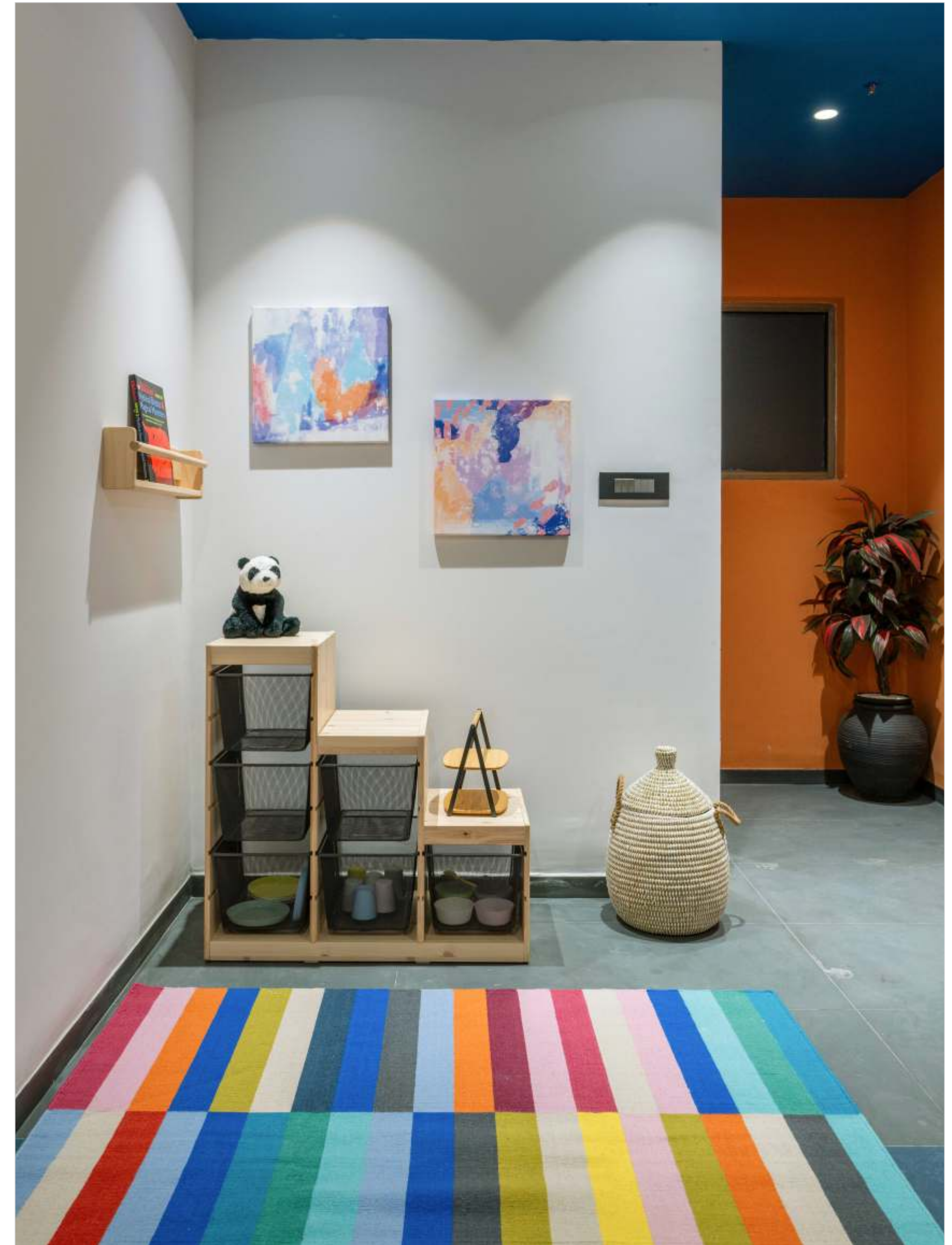
A 5 Star banquet hall, available to residents who need to celebrate a family occasion in a grand way.

Actual clubhouse images

CRECHE

Taking care of your needs and your children.

With a variety of toys and learning materials, the creche in the community serves as a safe haven for your child while you're at work.





Actual clubhouse image

INDOOR BADMINTON COURT

Have a wonderful and liberating game of badminton.
Get those feet moving. And that heart pumping.



Actual clubhouse image



Evolve your style

Ensuring a comprehensive experience of relaxation and beauty, the spa & salon is your go-to place for indulgence and transformation.



Actual clubhouse images

Explore the Excitement of Indoor Games

Turn any dull day into a thrilling and educational adventure with a plethora of indoor games in the community. A fun and engaging way to keep yourself and your children active, entertained, and learning indoors, these games create a well-rounded playtime experience.



Actual clubhouse images



Actual clubhouse image

CLUBHOUSE THIRD FLOOR

GUEST BEDROOM | MEETING ROOM | COFFEE SHOP | YOGA & MEDITATION

Actual clubhouse images



Exceptionally involving but a lot less tiring.
Get a great mind and body work out.

GUEST SUITE



Guest Room Way



Lovely, soft, romantic lighting.
Well designed spaces dotted with collectibles.
Is this not the heaven you were seeking?

Actual clubhouse images

MEETING ROOM

A serious business-like ambience for you to tie up loose ends of work.
Makes sure you'll never fall behind in your quest for complete control of your life.



Actual clubhouse image



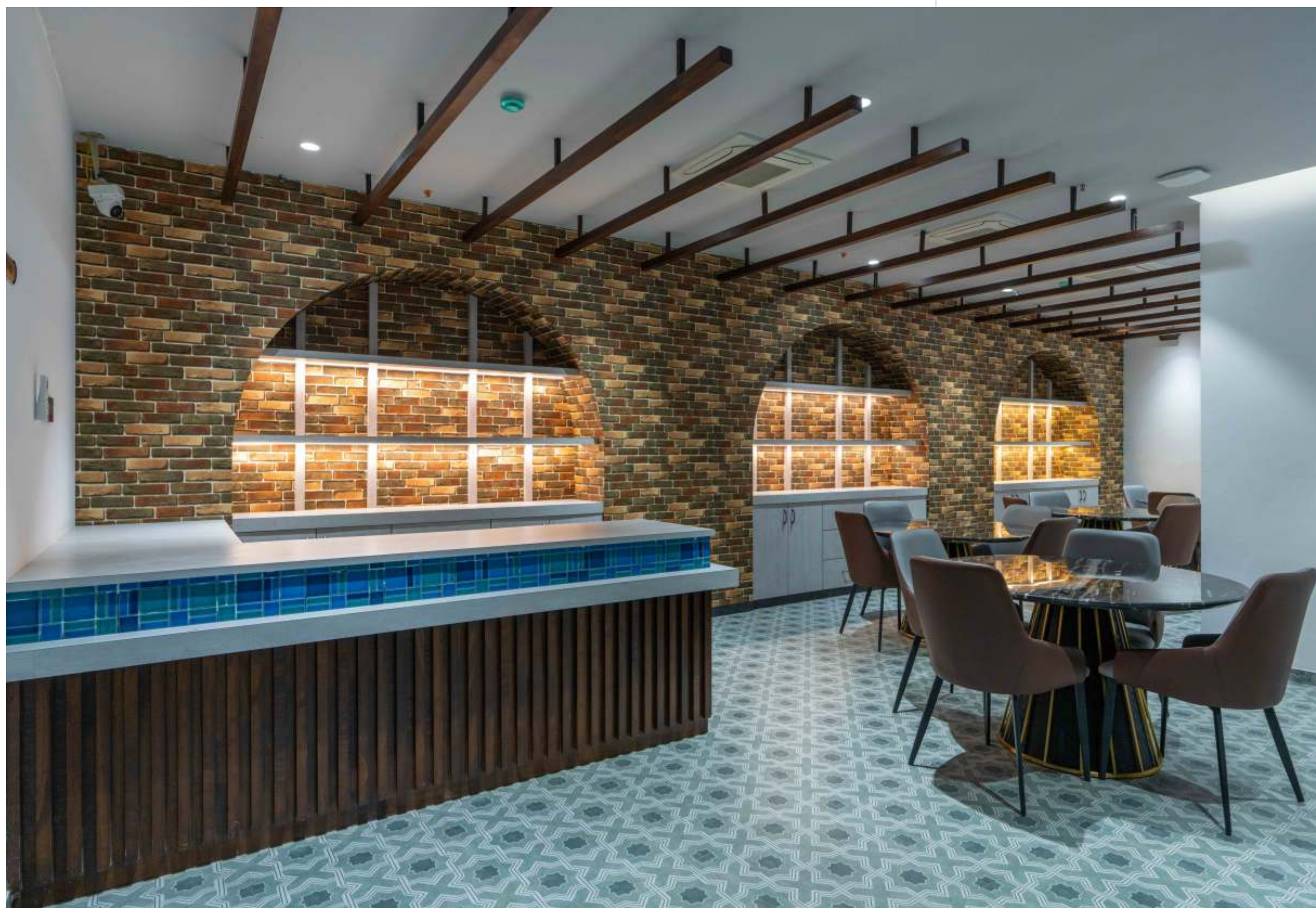
Actual clubhouse images



Your library is an exceptionally beautiful space to both look at and spend time in.

COFFEE SHOP

Actual clubhouse images



Something light, something snappy;
a little bite to keep you happy.



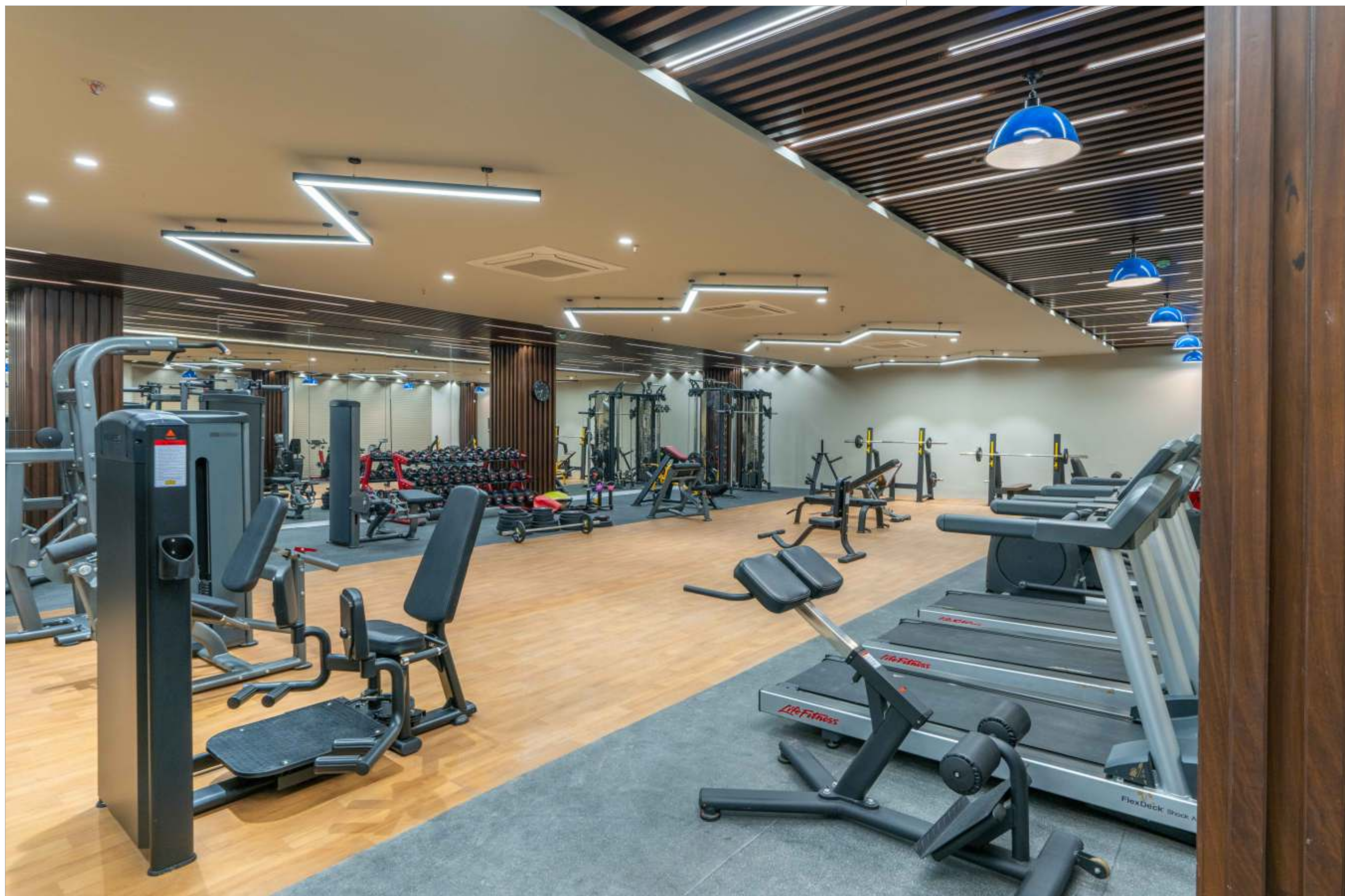
MINI THEATER

A super comfortable and moving cinematic experience, in every way.



Actual clubhouse image

FITNESS CENTRE

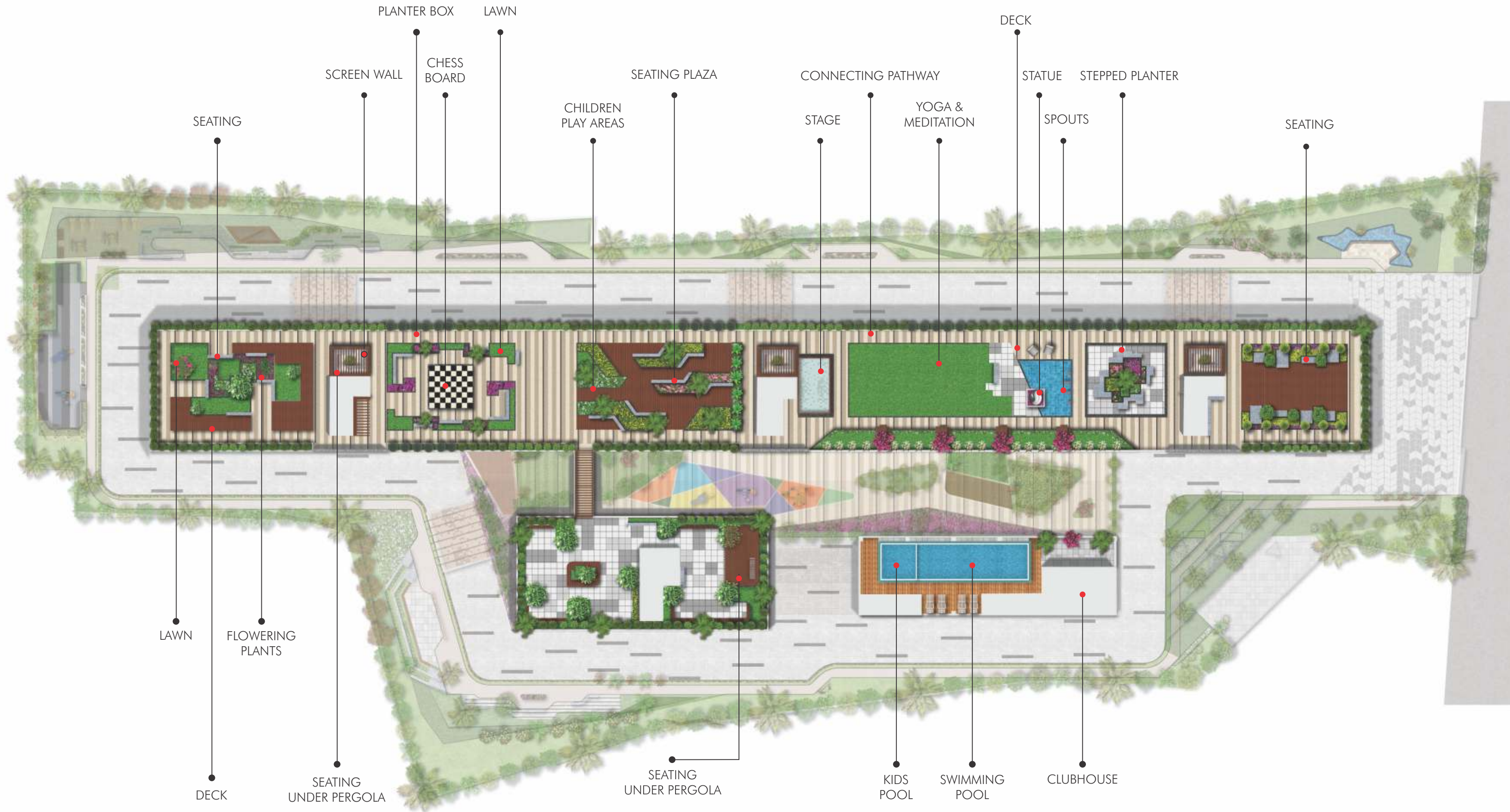


Actual clubhouse images



Keep fit. Work out. Tone up.
And enjoy the experience and benefits thereafter.

TERRACE PLAN



Roof-top Swimming Pool

Separate pools for adults and kids, plus a little privacy on the 5th floor of the clubhouse. With changing rooms, safety features, full time lifeguard and fixed hour coaching.



TERRACE SWIMMING POOL



SKY GARDEN

Enjoy spectacular views over the city as the sun sets.
Indulge in an ambiance where each detail adds to an exhilarating experience.



Actual terrace image

A million dollar view, any way you look at it.
Think of it as a blessing from the heavens.



Actual terrace image

Stroll through the lush landscaped gardens before making your way to the open-air terrace.



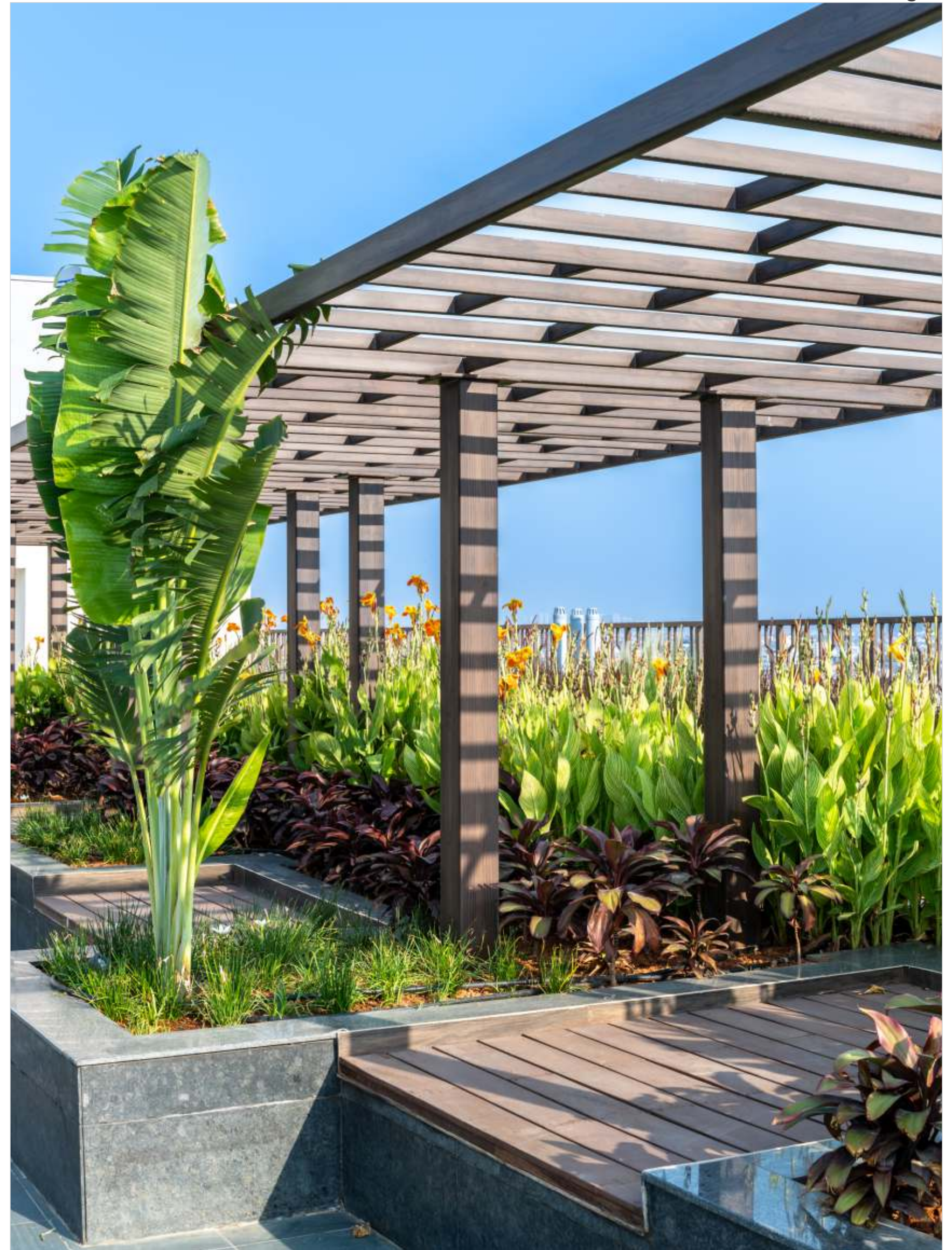
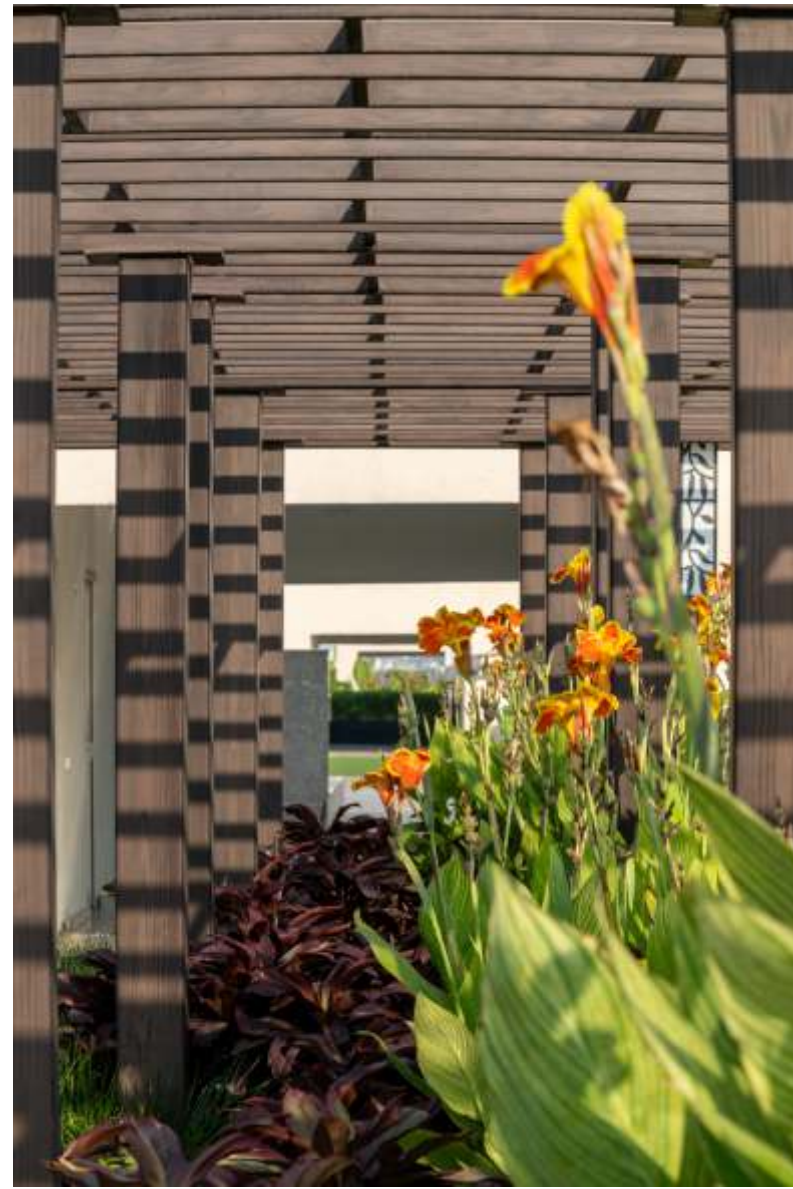
Actual terrace image



Actual terrace image

SKY GARDEN

Beyond boardrooms and your daily grind is a life waiting to be lived. A retreat under the open skies where you can relax, listen to the soothing sounds of water bodies and smell the fragrance of flowers. It's an ideal place to rejuvenate, refresh and reclaim your life.



SKY GARDEN

Keep your spirits soaring and immerse yourself in an amazing atmosphere surrounded by twinkling stars.



Actual terrace image

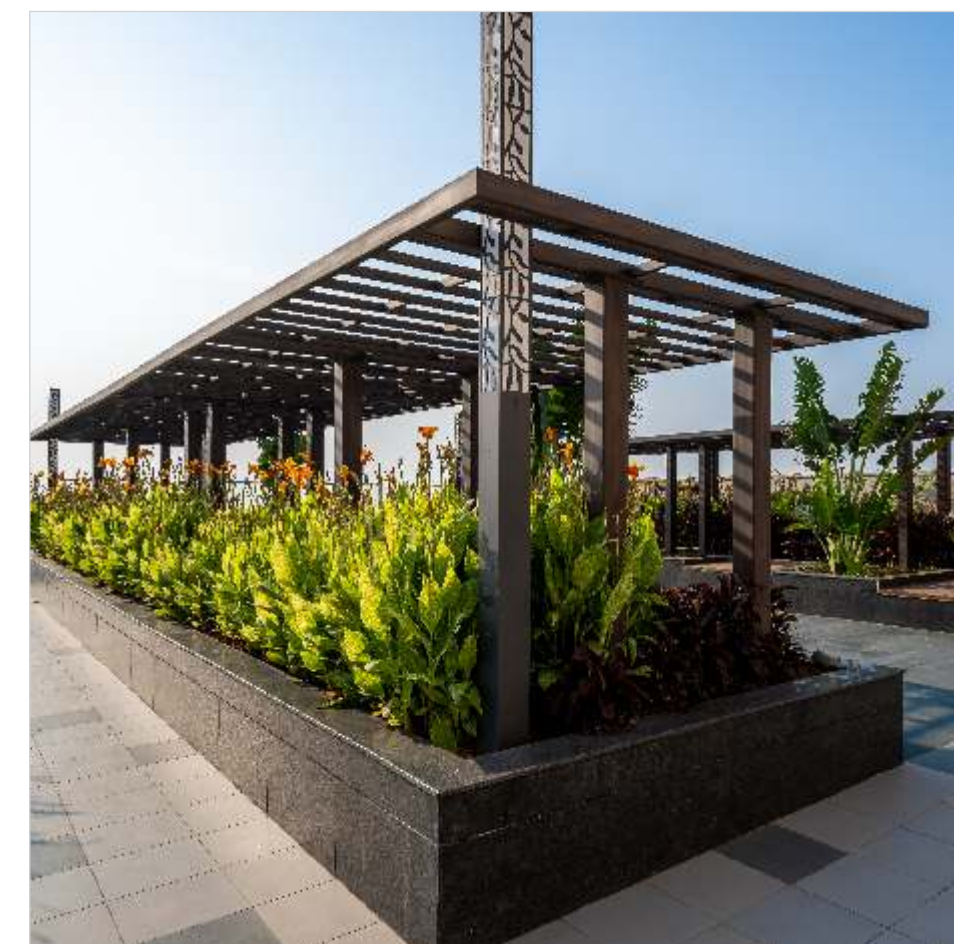


Actual terrace image

SKY GARDEN



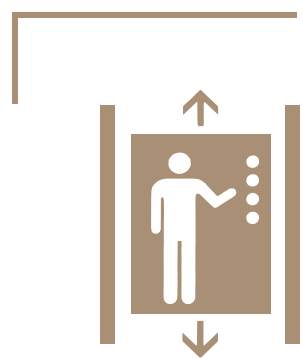
Actual terrace images



Aesthetics that take your breath away.
And the soothing sounds of water to relax your day.

Actual terrace images

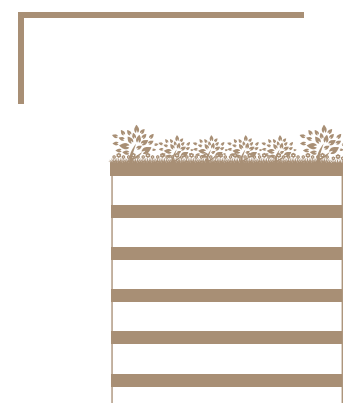
SPECIFICATIONS



Two passenger lifts in each block



One service lift in each block



Terrace is fully landscaped area



Provision for car wash facility



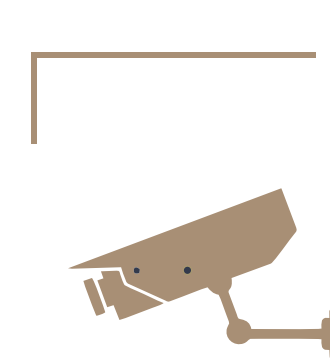
Designer landscape with water bodies



Rain water harvesting



Video door phone at main door



Round the clock security



Doors height 7'6" x 4'6"



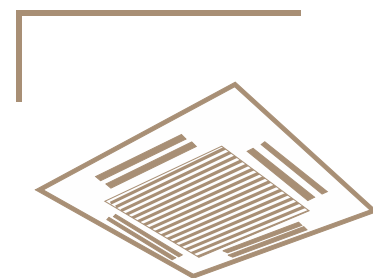
Aluminum windows with DGU glass



Italian marble flooring



Wooden flooring in all bedrooms



VRV system in each flat



Modular kitchen wet & dry



Rain Shower in master & kids bathrooms



Home automation

LOCATION MAP



The best of Hyderabad at your doorstep.

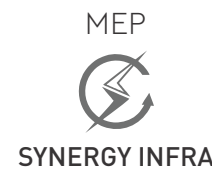
PROXIMITY:

Rajbhavan	- 2 mins
Hussain Sagar	- 5 mins.
Necklace Road	- 5 mins
Yashoda Hospital	- 5 mins.
Hyderabad Central	- 5 mins
Taj Krishna	- 10 mins.
GVK One	- 10 mins.
Ameerpet Metro Railway Station	- 10 mins.

Actual View of Hussain Sagar Lake from Sky City

PROJECT CONSULTANTS

MASTER PLANNING,
ARCHITECTURE & INTERIORS



QR code

TWO REAL ESTATE MARQUEES COME TOGETHER TO CREATE A NEW ICONIC LANDMARK

DSR

An ISO Certified company, DSR carries a rich legacy of over 3 decades built on the trust of thousands of customers. DSR has conceived and built a portfolio of high-end luxury projects that have contributed greatly to the changing skyline of Bengaluru and Hyderabad. Each of these landmark projects is an excellent showcase for architectural and infrastructural brilliance and are spoken about for their quality, contemporaneity and cutting-edge presence.

SSC

Sri Sreenivasa Constructions has built a strong reputation for luxurious, quality living spaces. And this has made it a popular choice amongst those who seek exceptional design and quality workmanship. The company has an in-depth understanding of customer preferences and changing trends, and the requisite experience to blend the two to deliver homes which guarantee utmost satisfaction.

DISCLAIMER:

1. All dimensions are in Square Feet, and measured from finish to finish excluding construction tolerances.
2. All materials, dimensions, and drawings are approximate only.
3. Information is subject to change without notice, at developer's absolute discretion.
4. Actual area may vary from the stated area.
5. All images used are for illustrative purposes only and do not represent the actual size, features, specifications, fittings, and furnishings.
6. The developer reserves the right to make revisions / alterations, at it's absolute discretion, without any liability whatsoever.



DSR-SSC BUILDERS AND DEVELOPERS

DSR SIGNATURE Building, 1st & 2nd Floor, Plot No: 506, Rd No: 10, Avenue 4, Kakatiya Hills
Madhapur, Hyderabad, Telangana - 500 033

M: +91 91210 45678 | 96424 34567 | 87 9000 9000
E: sales@srisreenivasa.com | www.srisreenivasa.com